



DESCRIPTION

The FlexPoint Fiber to Fiber Converter converts between single-mode (SM) and multimode (MM) fiber cable.

PRODUCTS

See data sheets for supported models.

100FF Fast Ethernet Fiber-to-Fiber Media Converter
1000FF Gigabit Fiber-to-Fiber Media Converter
OC3FF OC-3/STM-1 Fiber-to-Fiber Media Converter
OC12FF OC-12/STM-4 Fiber-to-Fiber Media Converter

POWER ADAPTER NOTICE

When used in a stand-alone configuration, this product should always be used with its enclosed Power Adapter.

WARNING

Before plugging the Power Adapter to any wall outlet or AC power source, verify that the power on the unit is appropriate for your AC line voltage source.

General and Copyright Notice

This publication is protected by U.S. and international copyright laws. All rights reserved. The whole or any part of this publication may not be reproduced, stored in a retrieval system, translated, transcribed, or transmitted, in any form, or by any means, manual, electric, electronic, electromagnetic, mechanical, chemical, optical or otherwise, without prior explicit written permission of Omnitron Systems Technology, Inc.

The following trademarks are owned by Omnitron Systems Technology, Inc.: FlexPoint®, FlexSwitch™, iConverter®, miConverter®, NetOutlook®, OmniLight®, OmniConverter®, RuggedNet®, Omnitron Systems Technology, Inc.™, OST™ and the Omnitron logo.

All other company or product names may be trademarks of their respective owners.

The information contained in this publication is subject to change without notice. Omnitron Systems Technology, Inc. is not responsible for any inadvertent errors.

MOUNTING

The FlexPoint FF modules can be DIN-rail mounted using the DIN-rail mounting bracket (8250), wall-mounted using a wall mounting kit (4380), rack-mounted using a 5-Module shelf (4392) or inserted in a 14-Module FlexPoint Powered Chassis.

To power the module using the AC power adapter, connect the barrel connector at the end of the wire on the power adapter to the barrel connector on the module. Connect the power adapter to the AC outlet. Confirm that the module has powered up properly by checking the Power LED.

Attach the fiber cables to the FlexPoint FF ST or SC connectors (depending on the model). The FlexPoint transmit (Tx) must attach to the receive side on the device at the far end of the fiber and the receive (Rx) must attach to the transmit side.

FlexPoint 100FF

The FlexPoint 100FF fiber ports operate in manual mode. Full or Half-Duplex operation is dictated by the connecting device.

Warranty

This product is warranted to the original purchaser (Buyer) against defects in material and workmanship for a period of two (2) years from the date of shipment. A lifetime warranty may be obtained by the original purchaser by registering this product at www.omnitron-systems.com/support within ninety (90) days from the date of shipment. During the warranty period, Omnitron will, at its option, repair or replace a product which is proven to be defective with the same product or with a product with at least the same functionality.

For warranty service, the product must be sent to an Omnitron designated facility, at Buyer's expense. Omnitron will pay the shipping charge to return the product to Buyer's designated US address using Omnitron's standard shipping method.

LED Function	Color	Description
Power	Amber	OFF: No power ON: Module has power
Link / Rx	Green	OFF: No fiber link ON: Link/Data activity

Standard Compliances	IEEE 802.3 or SONET OC-3, SDH STM-1 or SONET OC-12, SDH STM-4 (depending on the model)	
Regulatory Compliances	Safety: EMI: ACT:	UL, cUL, CE, UKCA FCC Class A TAA, BAA, NDAA
Environmental	RoHS, REACH, WEEE	
Port Types	Fiber:	ST or SC (speed depends on model)
Cable Types	Fiber:	Multimode: 50/125µm, 62.5/125µm Single-mode: 9/125µm
AC Power Requirements	AC Adapter:	100 - 240VAC/50 - 60Hz 0.04A @ 120VAC (max)
DC Power Requirements	DC Input: (AC Adapter)	+6.0 to +15VDC 0.2A @ 9VDC 2.5mm Barrel
	DC Input: (Molex Connector)	+4.75 to +5.25VDC, 0.5A @ 5VDC
Dimensions W x D X H	3.0" x 4.0" x 1.0" (76.2 mm x 101.6 mm x 25.4 mm)	
Weight	6 oz. (170.1 grams)	
Temperature	Commercial:	0 to 50°C
Humidity	5 to 95% (non-condensing)	
Altitude	-100m to 4,000m	
MTBF (hrs)	Module: AC Adapter (-1): AC Adapter (-2):	2,600,000 250,000 100,000
Warranty	Lifetime warranty with 24/7/365 free Technical Support	

Limitation of Warranty

The foregoing warranty shall not apply to product malfunctions resulting from improper or inadequate use and/or maintenance of the equipment by Buyer, Buyer-supplied equipment, Buyer-supplied interfacing, unauthorized modifications or tampering with equipment (including removal of equipment cover by personnel not specifically authorized and certified by Omnitron), or misuse, or operating outside the environmental specification of the product (including but not limited to voltage, ambient temperature, radiation, unusual dust, etc.), or improper site preparation or maintenance.

No other warranty is expressed or implied. Omnitron specifically disclaims the implied warranties of merchantability and fitness for any particular purpose.

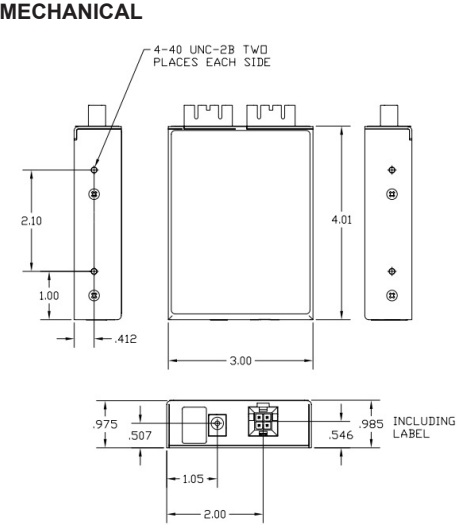
The remedies provided herein are the Buyer's sole and exclusive remedies. Omnitron shall not be liable for any direct, indirect, special, incidental, or consequential damages, whether based on contract, tort, or any legal theory.

Standard Compliances	IEEE 802.3 or SONET OC-3, SDH STM-1 or SONET OC-12, SDH STM-4 (depending on the model)	
Regulatory Compliances	Safety: EMI: ACT:	UL, cUL, CE, UKCA FCC Class A TAA, BAA, NDAA
Environmental	RoHS, REACH, WEEE	
Port Types	Fiber:	ST or SC (speed depends on model)
Cable Types	Fiber:	Multimode: 50/125µm, 62.5/125µm Single-mode: 9/125µm
AC Power Requirements	AC Adapter:	100 - 240VAC/50 - 60Hz 0.04A @ 120VAC (max)
DC Power Requirements	DC Input: (AC Adapter)	+6.0 to +15VDC 0.2A @ 9VDC 2.5mm Barrel
	DC Input: (Molex Connector)	+4.75 to +5.25VDC, 0.5A @ 5VDC
Dimensions W x D X H	3.0" x 4.0" x 1.0" (76.2 mm x 101.6 mm x 25.4 mm)	
Weight	6 oz. (170.1 grams)	
Temperature	Commercial:	0 to 50°C
Humidity	5 to 95% (non-condensing)	
Altitude	-100m to 4,000m	
MTBF (hrs)	Module: AC Adapter (-1): AC Adapter (-2):	2,600,000 250,000 100,000
Warranty	Lifetime warranty with 24/7/365 free Technical Support	

Environmental Notices

The equipment covered by this manual must be disposed of or recycled in accordance with the Waste Electrical and Electronic Equipment Directive (WEEE Directive) of the European Community directive 2012/19/EU on waste electrical and electronic equipment (WEEE) which, together with the RoHS Directive 2015/863/EU, for electrical and electronic equipment sold in the EU after July 2019. Such disposal must follow national legislation for IT and Telecommunication equipment in accordance with the WEEE directive: (a) Do not dispose waste equipment with unsorted municipal and household waste. (b) Collect equipment waste separately. (c) Return equipment using collection method agreed with Omnitron.

The equipment is marked with the WEEE symbol shown to indicate that it must be collected separately from other types of waste. In case of small items the symbol may be printed only on the packaging or in the user manual. If you have questions regarding the correct disposal of equipment go to www.omnitron-systems.com/support or e-mail to Omnitron at intlinfo@omnitron-systems.com.



Technical Support:

Phone: (949) 250-6510
Fax: (949) 250-6514
Address: Omnitron Systems Technology
38 Tesla
Irvine, CA 92618 USA
E-mail: support@omnitron-systems.com
URL: <http://www.omnitron-systems.com>

User Warranty Registration

Please complete both sides and mail or fax this registration form to:

Omnitron Systems Technology, Inc.
38 Tesla
Irvine, CA 92618 USA
Fax: (949) 250-6514

Name: _____
Company: _____
Address: _____
City: _____ State: _____ Zip Code: _____
Country: _____
Phone: _____ Fax: _____
E-mail: _____

User Warranty Registration

Please register on-line @ <http://www.omnitron-systems.com> or complete both sides and mail or fax this registration form to:

FlexPoint Type: _____
Model: _____ Purchase Date: _____
Serial Number: _____
Purchased From: _____
Address: _____
City: _____ State: _____ Zip Code: _____
Country: _____
Comments and Suggestions: _____
