



DESCRIPTION

The FlexPoint 10/100 is a 10BASE-T or 100BASE-TX RJ-45 to 100BASE-FX fiber media converter featuring a 10/100 auto-sensing RJ-45 port.

The fiber port supports fixed-fiber connectors (SC, ST or LC) and Small Form Pluggable (SFP) transceivers, enabling easy adaptability to different fiber types, distances and wavelengths.

The FlexPoint 10/100 supports multimode, single-mode, single-mode single-fiber, in standard and CWDM wavelengths.

See data sheet for supported models.

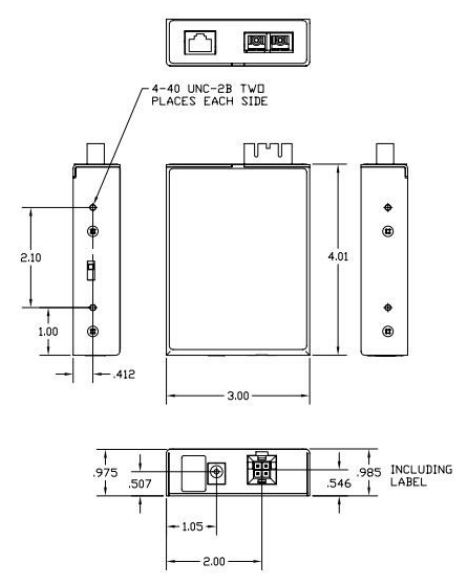
POWER ADAPTER NOTICE

When used in a stand-alone configuration, this product should always be used with its enclosed Power Adapter.



WARNING

Before plugging the Power Adapter to any wall outlet or AC power source, verify that the power on the unit is appropriate for your AC line voltage source.

MECHANICAL


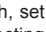


SWITCH SETTINGS

RJ-45 Crossover Switch:  / 

When the Mode of Operation switch is set to the “Auto” position, the RJ-45 Crossover switch is disabled.

When the Mode of Operation switch is set to the “Man” position the RJ-45 Crossover switch is enabled.

When connecting the RJ-45 port to a hub or switch, set the switch to straight through . When connecting to a PC or workstation, set the switch to crossover  (factory default).

UTP Mode of Operation Switch: Auto / Man

Setting the switch to “Auto” (factory default) enables the RJ-45 port to automatically determine the speed, duplex mode and crossover functions of the connected device. If the connected device cannot provide the proper signal to indicate its mode of operation, set the switch to “Man.”

UTP Speed Switch: 10 / 100

When the Mode of Operation switch is set to the “Man” position, the UTP Speed switch determines the speed of the RJ-45 port. When set to “100” (factory default), the RJ-45 port will operate at 100Mbps. When set to “10” the RJ-45 port will operate at 10Mbps.

UTP Duplex Switch: FDX / HDX

When the Mode of Operation switch is set to the “Man” position, the UTP Duplex switch determines the duplex mode for the RJ-45 port. When set to “FDX” (factory default), the RJ-45 port operates in Full-Duplex. When set to “HDX”, the RJ-45 port operates in Half-Duplex.

General and Copyright Notice

This publication is protected by U.S. and international copyright laws. All rights reserved. The whole or any part of this publication may not be reproduced, stored in a retrieval system, translated, transcribed, or transmitted, in any form, or by any means, manual, electric, electronic, electromagnetic, mechanical, chemical, optical or otherwise, without prior explicit written permission of Omnitron Systems Technology, Inc.

The following trademarks are owned by Omnitron Systems Technology, Inc.: FlexPoint™, FlexSwitch™, iConverter®, miConverter™, NetOutlook®, OmniLight®, OmniConverter®, RuggedNet®, Omnitron Systems Technology, Inc.™, OST™ and the Omnitron logo.

All other company or product names may be trademarks of their respective owners.

The information contained in this publication is subject to change without notice. Omnitron Systems Technology, Inc. is not responsible for any inadvertent errors.

Warranty

This product is warranted to the original purchaser (Buyer) against defects in material and workmanship for a period of two (2) years from the date of shipment. A lifetime warranty may be obtained by the original purchaser by registering this product at www.omnitron-systems.com/support within ninety (90) days from the date of shipment. During the warranty period, Omnitron will, at its option, repair or replace a product which is proven to be defective with the same product or with a product with at least the same functionality.

For warranty service, the product must be sent to an Omnitron designated facility, at Buyer's expense. Omnitron will pay the shipping charge to return the product to Buyer's designated US address using Omnitron's standard shipping method.

Fiber Duplex Switch: FDX / HDX

Setting the Fiber Duplex switch to “FDX” sets the fiber port to Full-Duplex (factory default). Setting the Fiber Duplex switch to “HDX” sets the fiber port to Half-Duplex.

MOUNTING

The FlexPoint 10/100 can be wall -mounted using a wall mounting kit (4380), rack-mounted using a 5-Module shelf (4392) or inserted in a 14-Module FlexPoint Powered Chassis.

To power the module using a DC power source, prepare a power cable using a two conductor insulated wire (not supplied) with a 12AWG to 14AWG thickness. Cut the power cable to the length required. Strip approximately 3/8 of an inch of insulation from the power cable wires. Connect the power cables to the module by fastening the stripped ends to the DC power connector. Connect the power wires to the DC power source. The Power LED will indicate the presence of power.

To power the module using the AC power adapter, connect the barrel connector at the end of the wire on the power adapter to the barrel connector on the module. Connect the power adapter to the AC outlet. Confirm that the module has powered up properly by checking the Power LED.

Attach the fiber cables to the FlexPoint 10/100 ST, SC or LC connectors. The FlexPoint transmit (Tx) must attach to the receive side on the device at the far end of the fiber and the receive (Rx) must attach to the transmit side.

When using single-fiber (SF) models, the TX wavelength must match the RX wavelength at the other end and the RX wavelength must match the TX wavelength at the other end

When using a SFP model, insert the SFP fiber transceiver into the SFP receptacle on the module.

Limitation of Warranty

The foregoing warranty shall not apply to product malfunctions resulting from improper or inadequate use and/or maintenance of the equipment by Buyer, Buyer-supplied equipment, Buyer-supplied interfacing, unauthorized modifications or tampering with equipment (including removal of equipment cover by personnel not specifically authorized and certified by Omnitron), or misuse, or operating outside the environmental specification of the product (including but not limited to voltage, ambient temperature, radiation, unusual dust, etc.), or improper site preparation or maintenance.

No other warranty is expressed or implied. Omnitron specifically disclaims the implied warranties of merchantability and fitness for any particular purpose.

The remedies provided herein are the Buyer's sole and exclusive remedies. Omnitron shall not be liable for any direct, indirect, special, incidental, or consequential damages, whether based on contract, tort, or any legal theory.

NOTE: The release latch of the SFP fiber transceiver must be in the closed (up) position before insertion.

Connect a UTP cable (Category 5 or better) to the RJ-45 port on the FlexPoint 10/100 and connect the other end to a 10/100M capable device. The crossover switch may need to be configured depending on the configuration of the Mode of Operation switch and the attached device. See RJ-45 Crossover Switch settings.

LED INDICATORS

LED	Color	Description
Power	Yellow	Module has power
UTP Auto	Green	ON: Auto-negotiation is selected
UTP FDX	Green	OFF: Half-Duplex is detected ON: Full-Duplex is detected
UTP Link	Green	ON: Link / Data received
UTP 10	Yellow	ON: 10Mbps link detected
UTP 100	Green	ON: 100Mbps link detected
Fiber FDX	Green	ON: Full-Duplex is selected
Fiber Link	Green	ON: Link / Data received

SPECIFICATIONS

Dimensions W x D x H	3.0" x 4.0" x 1.0" (76.2 mm x 101.6 mm x 25.4 mm)	
Weight	6 oz. (170.1 grams)	
Temperature	Commercial: Wide: Extended:	0 to 50°C -40 to 60°C -40 to 75° C
Humidity	5 to 95% (non-condensing)	
Altitude	-100m to 4,000m	
MTBF (hrs)	Module: AC Adapter (-1): AC Adapter (-2):	1,100,000 250,000 100,000
Warranty	Lifetime warranty with 24/7/365 free Technical Support	

Environmental Notices

The equipment covered by this manual must be disposed of or recycled in accordance with the Waste Electrical and Electronic Equipment Directive (WEEE Directive) of the European Community directive 2012/19/EU on waste electrical and electronic equipment (WEEE) which, together with the RoHS Directive 2015/863/ EU, for electrical and electronic equipment sold in the EU after July 2019. Such disposal must follow national legislation for IT and Telecommunication equipment in accordance with the WEEE directive: (a) Do not dispose waste equipment with unsorted municipal and household waste. (b) Collect equipment waste separately. (c) Return equipment using collection method agreed with Omnitron.

The equipment is marked with the WEEE symbol shown to indicate that it must be collected separately from other types of waste. In case of small items the symbol may be printed only on the packaging or in the user manual. If you have questions regarding the correct disposal of equipment go to www.omnitron-systems.com/support or e-mail to Omnitron at intlinfo@omnitron-systems.com.



Standard Compliances	IEEE 802.3	
Regulatory Compliances	Safety: EMI: ACT:	UL, CE, UKCA FCC Class A TAA, BAA, NDA
Environmental	RoHS, REACH, WEEE	
Port Types	Copper: Fiber:	10/100BASE-T (RJ-45) 100BASE-FX (ST, SC, LC, SFP)
Cable Types	Copper: Fiber:	EIA/TIA 568A/B, Cat 5 and higher Multimode: 50/125µm, 62.5/125µm Single-mode: 9/125µm
AC Power Requirements	AC Adapter:	100 - 240VAC/50 - 60Hz 0.06A @ 120VAC (max)
DC Power Requirements	DC Input: (AC Adapter or Terminal)	+5.0 to +32.0VDC 0.5A @ 9VDC 2.5mm Barrel or Terminal
	DC Input: (Molex Connector)	+4.75 to +5.25VDC, 0.8A @ 5VDC

Technical Support:

Phone: (949) 250-6510
Fax: (949) 250-6514
Address: Omnitron Systems Technology
38 Tesla
Irvine, CA 92618 USA
E-mail: support@omnitron-systems.com
URL: <http://www.omnitron-systems.com>

Please complete both sides and mail or fax this registration form to:

User Warranty Registration
Omnitron Systems Technology, Inc.
38 Tesla
Irvine, CA 92618 USA
Fax: (949) 250-6514

Name: _____
Company: _____
Address: _____
City: _____ State: _____ Zip Code: _____
Country: _____
Phone: _____ Fax: _____
E-mail: _____

Please complete both sides of this form

Please register on-line @ <http://www.omnitron-systems.com> or complete both sides and mail or fax this registration form to:

User Warranty Registration

FlexPoint Type: _____
Model: _____
Serial Number: _____ Purchase Date: _____
Purchased From: _____
Address: _____
City: _____ State: _____ Zip Code: _____
Country: _____
Comments and Suggestions: _____

Please complete both sides of this form